



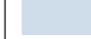


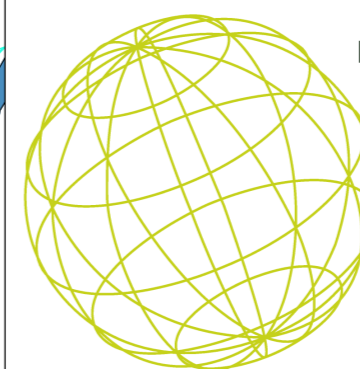
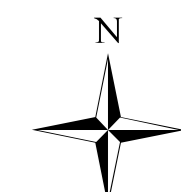
Révision de la Carte Communale d'HENNECOURT

Dossier pour enquête publique

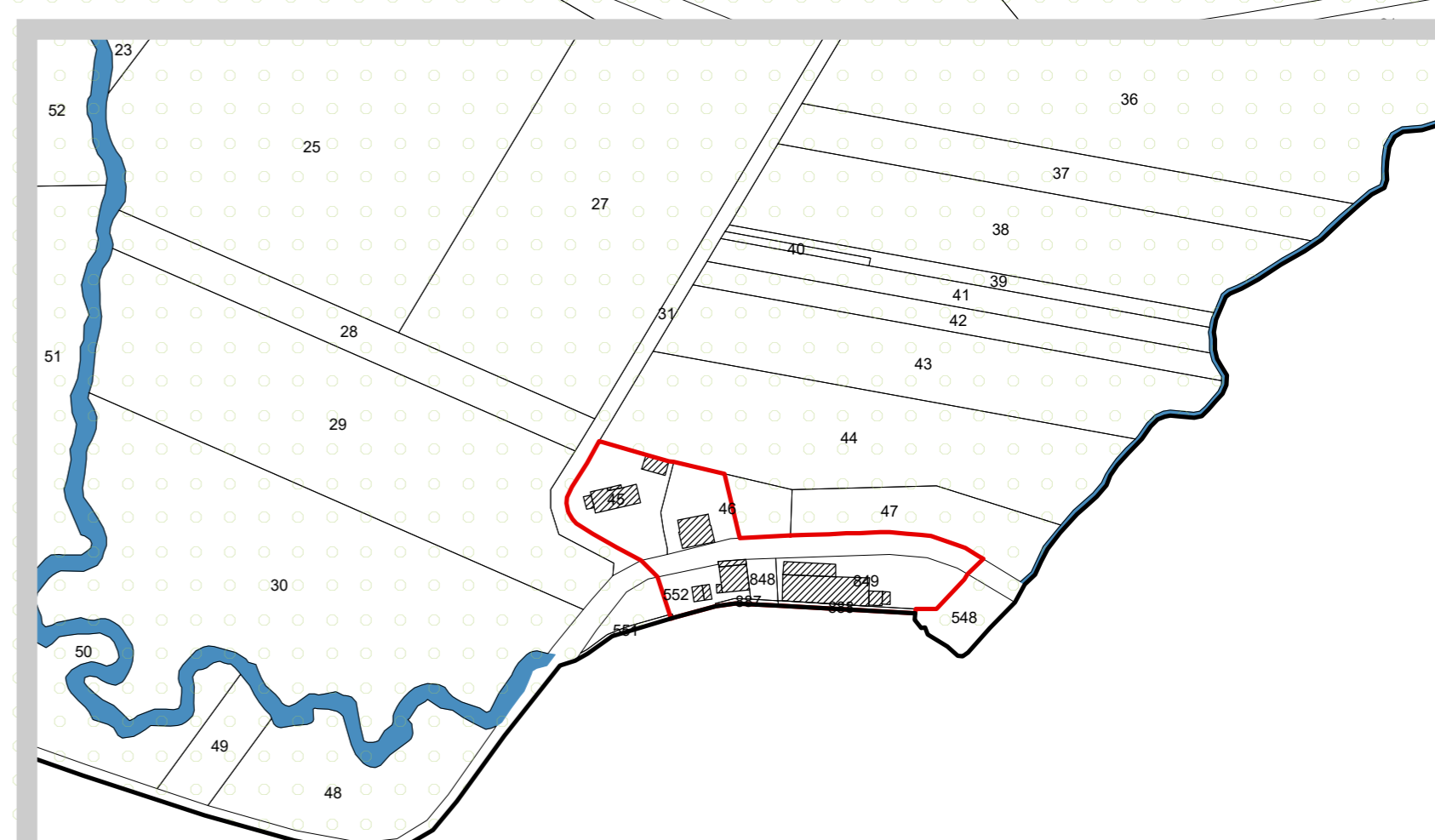
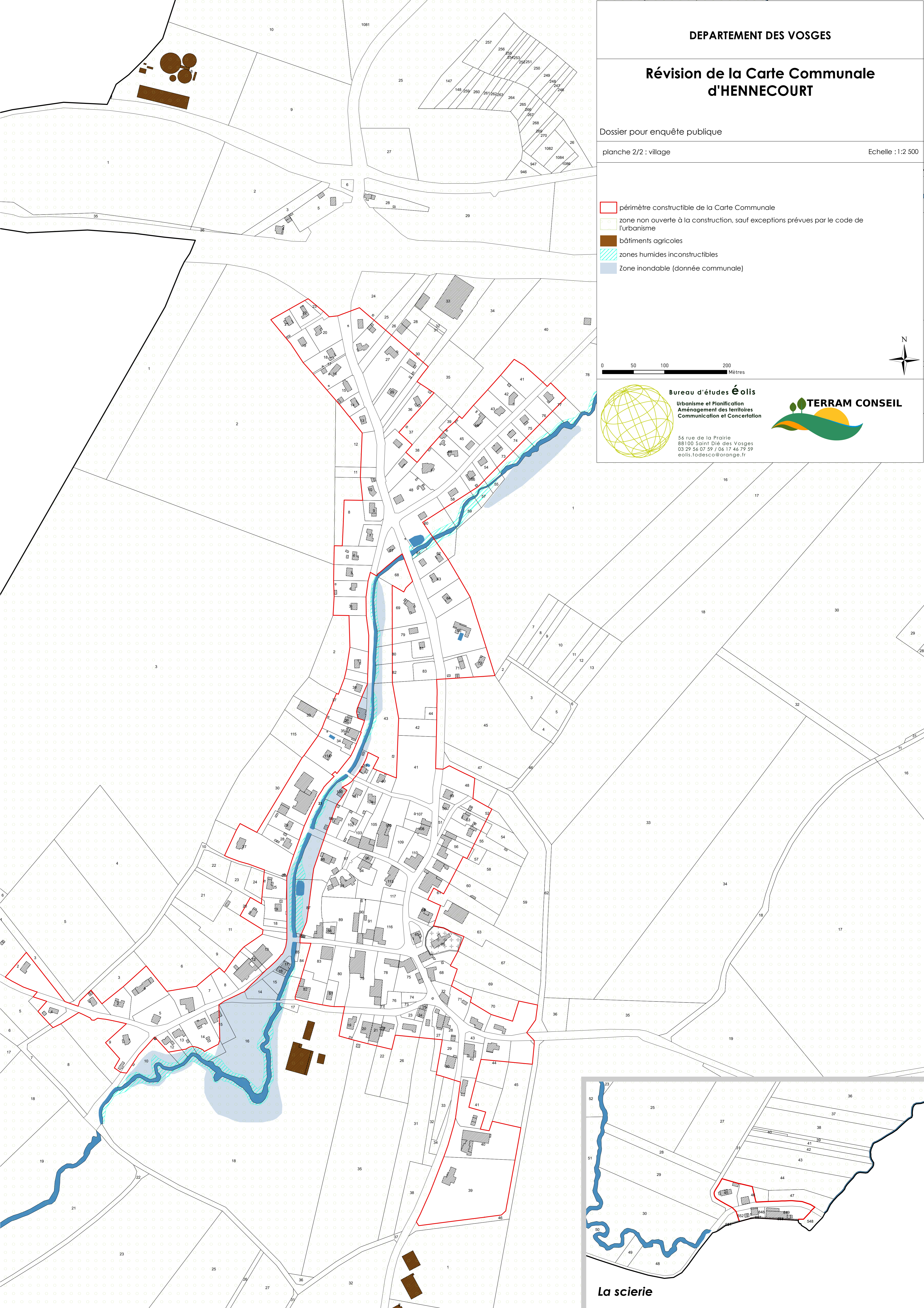
planche 2/2 : village

Echelle : 1:2.500

-  périmètre constructible de la Carte Communale
-  zone non ouverte à la construction, sauf exceptions prévues par le code de l'urbanisme
-  bâtiments agricoles
-  zones humides inconstructibles
-  Zone inondable (donnée communale)



Bureau d'études éolis
Urbanisme et Planification
Aménagement des territoires
Communication et Concertation
56 rue de la Prairie
88100 Saint-Dié-des-Vosges
03 29 56 07 59 / 06 17 46 79 59
eolis.todesca@orange.fr



La scierie